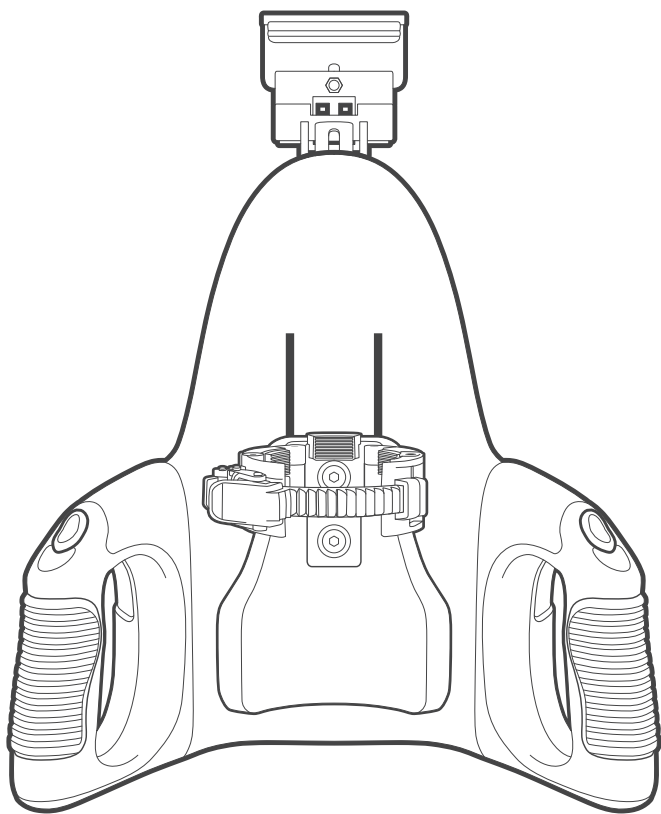


UNIVERSAL LAUNCH™



CARE AND USE GUIDE

The Universal Launch is intended to be used with original Fleshlight® or Fleshjack® products only. The use of any third party hardware product in combination with the Universal Launch violates the terms of usage and warranty.

Table of Contents

I. CHARGING YOUR DEVICE	1
II. USING YOUR DEVICE	2
III. LUBE.....	5
IV. CLEANING	5
V. DISCLAIMER AND WARNINGS	6
VI. DISPOSAL SPECIFICATIONS	7
VII. SPECS AND CUSTOMER SERVICE	5

I. CHARGING YOUR DEVICE

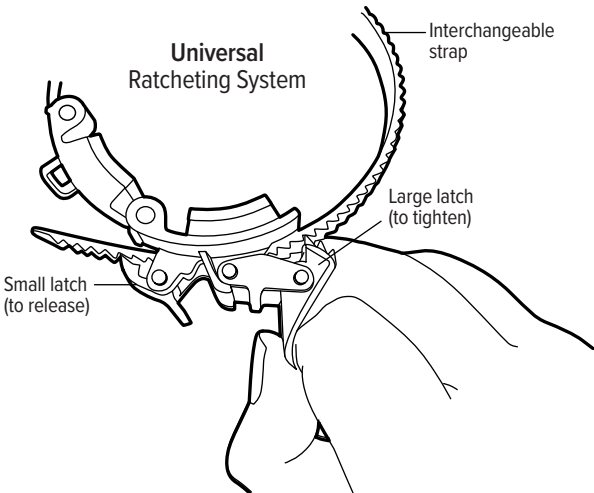
1. Insert the power adapter into the base of the unit and plug the unit into a power source.
2. Allow the unit to fully charge prior to using it for the first time. (The red status light will stop flashing once charged.)
3. **Note:** You may use your Universal Launch while the device is plugged in or run the device off of the rechargeable battery.
4. **Warning:** It is important that you keep your battery charged and never allow it to fully discharge. If the battery discharges fully, it is possible that it will no longer be capable of accepting a charge. Failing to maintain a charge on your battery will void your 90-day warranty.

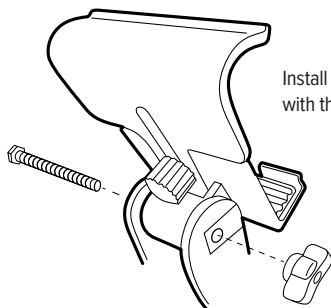
II. USING YOUR DEVICE

1. Before using the Universal Launch, securely strap your compatible Fleshlight product in using the Universal Ratcheting System.

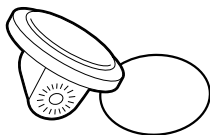
Slide your product through the gripped circular opening (there is a small latch on the side that can be pressed to release the belt if necessary). Once in a safe, desired position, use the large latch to tighten up the grip. Lift the large latch from its left side to ratchet the strap in snugly, taking care not to overtighten and possibly damage your Universal Launch or your stroker.

The Universal Launch ships with the standard length strap installed, but you will also find a longer strap included for wider products like Sex In A Can. To interchange the straps, use the small latch on the side to release and remove the strap by feeding it out from the right. Install the desired strap by feeding it back through the ratcheting system making sure that it sits beneath both latches. The latches engage and hold the strap in place.



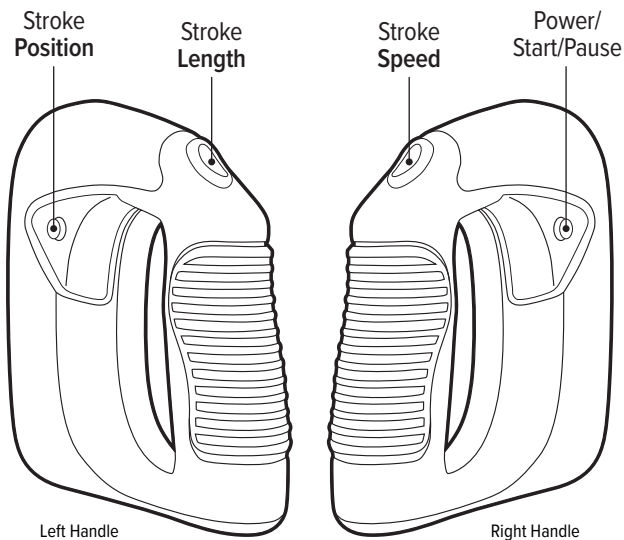


Install the top cell phone cradle with the supplied bolt and wingnut.



Optional magnetic mount
(Disc adheres to your device)

2. If desired, you may place your phone in the phone carriage at the top of the Universal Launch, locking it in place by tightening the back knob. Adjust its viewing angle by first loosening the wingnut on the left side, moving the carriage to an optimal position, and then re-tightening.
3. Apply Fleshlube® water-based lubricant to yourself and your Fleshlight product.
4. To power on the Universal Launch, press and hold the power button on the right side grip until the device becomes active (approximately three seconds).
5. Once activated, you can start the device by pressing the power button once.
6. **Note:** You can also press the power button once to pause the device while in use. When the device is paused, the lights on the rocker buttons on each grip will flash.



8. You may adjust any of the Speed, Length, or Position settings during use to create an optimal experience.

- **Stroke Speed:** Press the rocker button on the right grip up or down to increase or decrease the stroke speed.
- **Stroke Length:** Press the rocker button on the left grip up or down to increase or decrease the length of the stroke.
- **Stroke Position:** Press the button on the side of the left grip to adjust the position of the stroke. **Note:** *If you've set the stroke length to its maximum setting, the stroke position will not change when the button is pressed.*

9. Once finished, wipe down the Universal Launch, remove the stroker, follow the cleaning instructions for all Fleshlight products, and press and hold the power button to turn off the Universal Launch.

III. LUBE

Fleshlight recommends you use FleshLube® or another water-based lubricant with your Fleshlight toys both in and out of the Universal Launch.

Silicone- and oil-based lubricants can deteriorate the Fleshlight sleeve material.

Other substances like massage oils or hand creams can damage the Universal Launch.



IV. CLEANING



1. Remove the Fleshlight product from the Universal Launch.
2. Remove the sleeve from the outer casing.
3. Rinse the sleeve with warm water, coat with an anti-bacterial spray like FleshWash®, and allow to completely dry.
4. Rinse the outer casing or wipe down with antibacterial wipes.
5. Once the sleeve is dry, place the sleeve back in the casing.
6. After the sleeve is dry, you may coat it with Fleshlight Renewing Powder to help retain its smooth and soft texture.



V. DISCLAIMER AND WARNINGS

- Fleshlight® makes no medical claims with our devices.
- This device is not for use by persons under the age of 18.
- This device is not intended for use by anyone who is unable or unwilling to consent.
- This device is not intended for persons with reduced physical, sensory or mental capabilities, or a lack of experience and knowledge, unless they have supervision or instruction concerning use of the device by a person responsible for their safety,
- Fleshlight will not be held responsible for any undesirable results of misuse.
- Follow all directions as set forth by the manual and do not attempt to make any technical adjustments to your Universal Launch at home.
- Do not use the Universal Launch if there are exposed electronic elements.
- Do not use the Universal Launch if you are in a shower, bathtub, swimming pool, sauna steam room etc.
***The Universal Launch is **NOT** waterproof, avoid any exposure to water.*
- Do not use the Universal Launch if it is excessively hot to touch.
- Do not use the Universal Launch and Fleshlight device on inflamed or irritated areas.
- Avoid leaving your Universal Launch in direct sunlight and **NEVER** expose it to extreme heat.
- Never use cleansers containing alcohol, petrol or acetone.
- Do not use heating appliances to dry the sleeve or device.
- Avoid using harsh soaps as they can damage the sleeve material.
- Always store the device out of reach of children.

VI. DISPOSAL SPECIFICATIONS

You should not dispose of the Universal Launch in your trash. Like any other electronic device with a rechargeable battery, there are disposal regulations. These regulations vary by local municipality, city and by country. Be aware of how electronics are disposed of where you live. Fleshlight suggests you ask your local council center.

VII. SPECS AND CUSTOMER SERVICE

Specifications:

Materials: PC, ABS and Silicone

Finish: Gloss finish, Light Bead Blast finish

Size: 355.6 x 292.1 x 190.5 mm

Weight: ± 3.2 lb (1451.5 g)

Charging time: about 1.5h

User time: 60 minutes

Assistance:

If you have any problems with setup or using your device, please visit our FAQ page or contact our Customer Service team.

For frequently asked questions, visit:

www.fleshlight.com/pages/faq

Contact Fleshlight Customer Service:

Monday - Friday 7am - 8pm CST

International orders: +1-512-865-5266

CustomerService@fleshlight.com

FLESHLIGHT®
THE #1 SELLING MALE SEX TOY IN THE WORLD!